



2015

.c i f .c .c ( . e .c .c )



.....  
.....  
.....  
.....  
.....  
.....  
.....  
.....

.....

.....  
.....  
.....

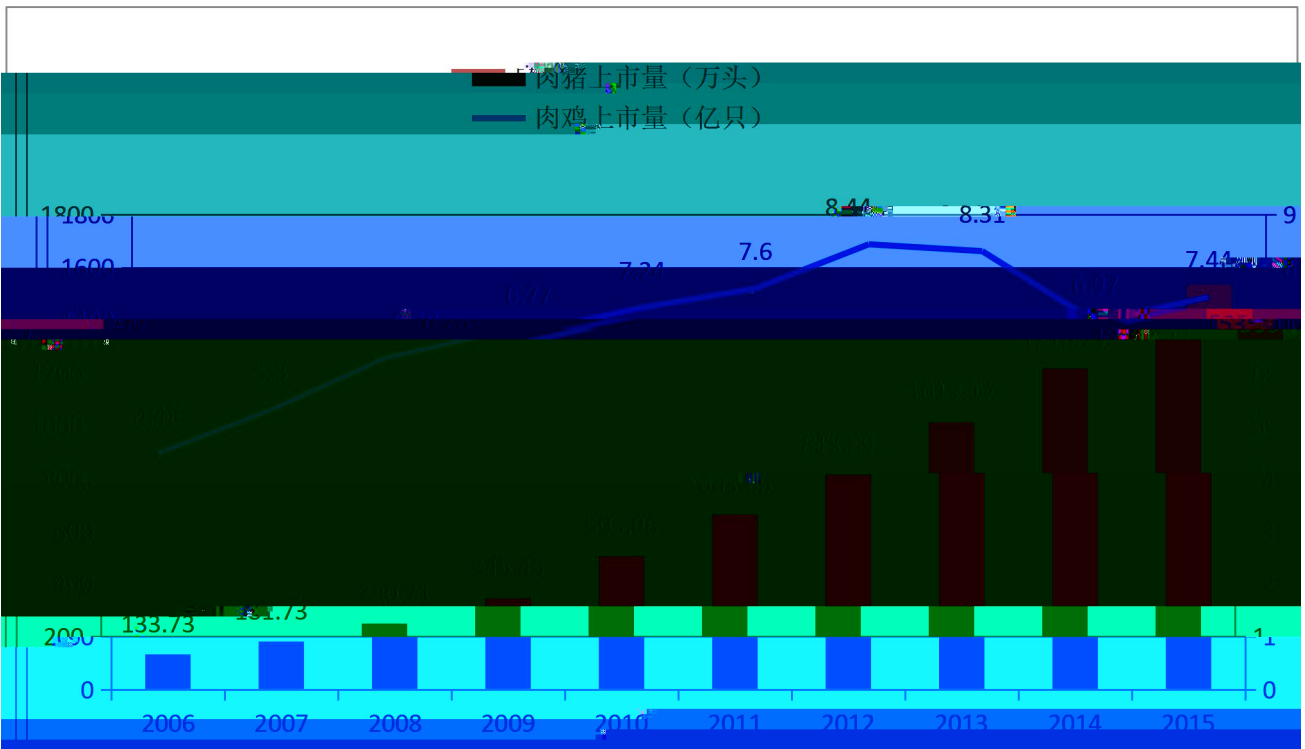
1983

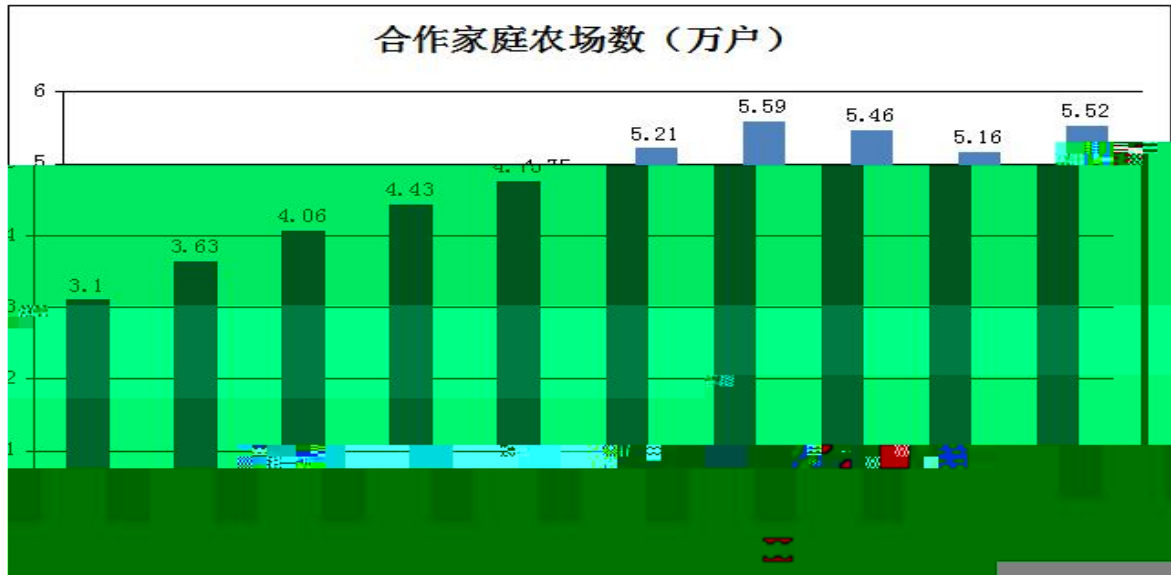
2015

+

5.52

	300498			
2015 12 31		20		194
5.52		4	391	67
2015		7.44	1,535.06	
4,820,467.60		3,269.38		





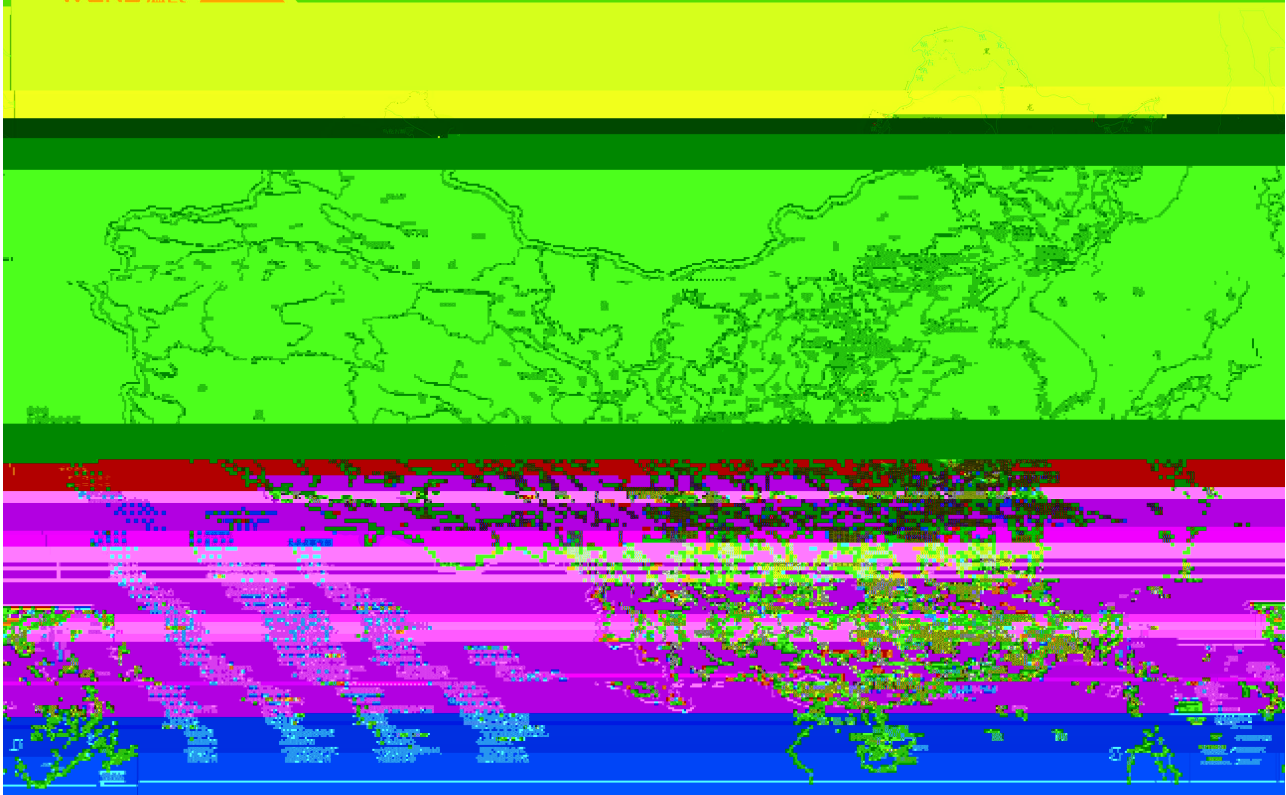
151

+

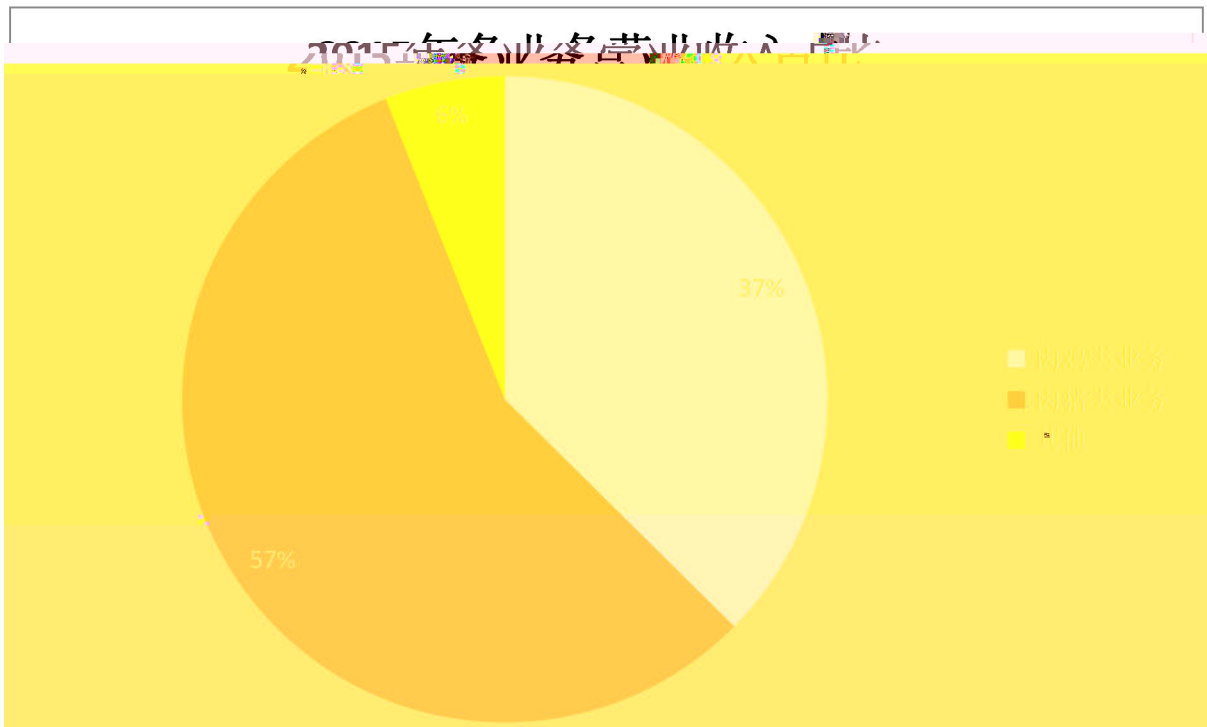
2015

500

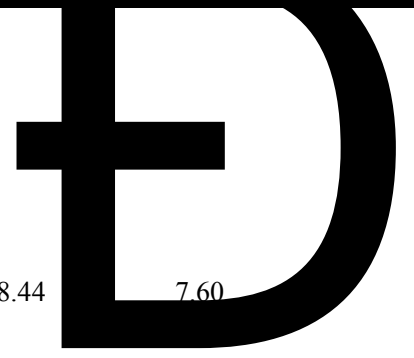
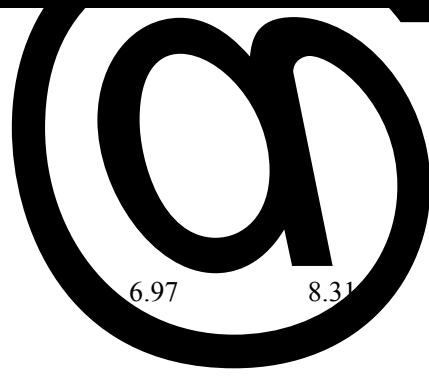
332



2023年各业务营业收入占比







EAS

20

EAS

300

1000

1-2

5-6

ERP

IO

1

1983

2

30

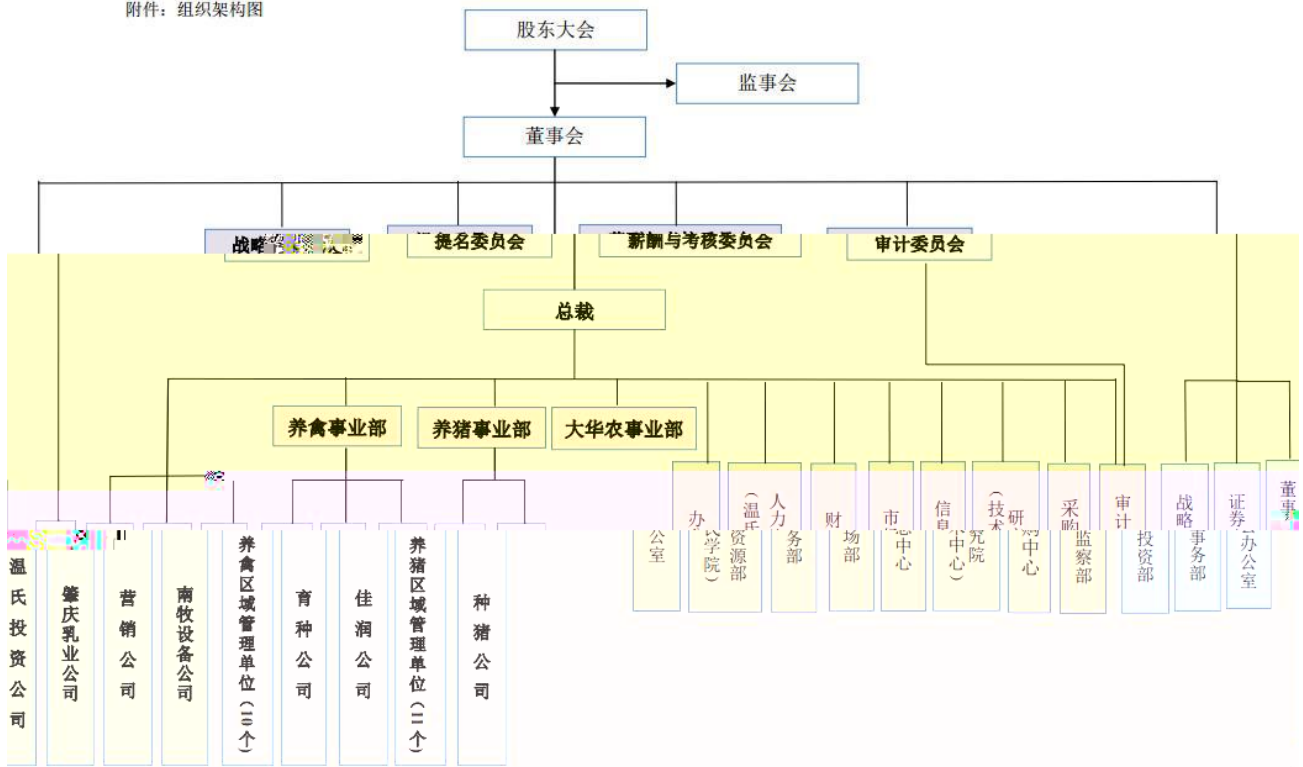
3

4

5

2006	1				H5
2007	11		100		
2008	5				
2009	11			19	
2010	7	2010		500	29
2010	11				
2011	2				
2012	2				
2012	6	-			
2012	12				
2013	9				
2013	12		1000		
2014	9				
2015	6				

附件：组织架构图



2006

2008

2010

2010

2010

2010

2010

2011

2012

2013

2013

2013

2013

2014

2014

2015

8000

+

+

1

2

3

	2006-2010		67.95
2011-2015		206.84	
2015	5.52		2
	61.19	55.91%	

1

+

;

2

(3)

(4)

(5)





					6800	
		15.92%				
	1.50%			82.58%		
11		16.74%			83.26%	
	2015		2016	5	9	2015
2015						3,625,247,380
10	5					1,812,623,690.00
		10	2			725,049,476
		2,709,549,644.23				

1

2

3

4

1  
+

30

2

1985

30

+

+

1

10

274.78

2

3

1

3000 5000 /

1.5

/

500 /

2

3

PDA

PDA

4

5

1991

2005

EAS

EAS

EAS

5000 / 20  
1.5 /

20

40

30

1

2



Q E 480

58 35

702

4

783

4

16

2017 2014 3 2015 4 1 158 # 352 16



ISO9001 HACCP GMP

1

50

3

7

2

2

ISO9001

EAS

EAS

IO

ž

4

/



1







1

2

3

4

1

2



3

4

2015

22

564

259

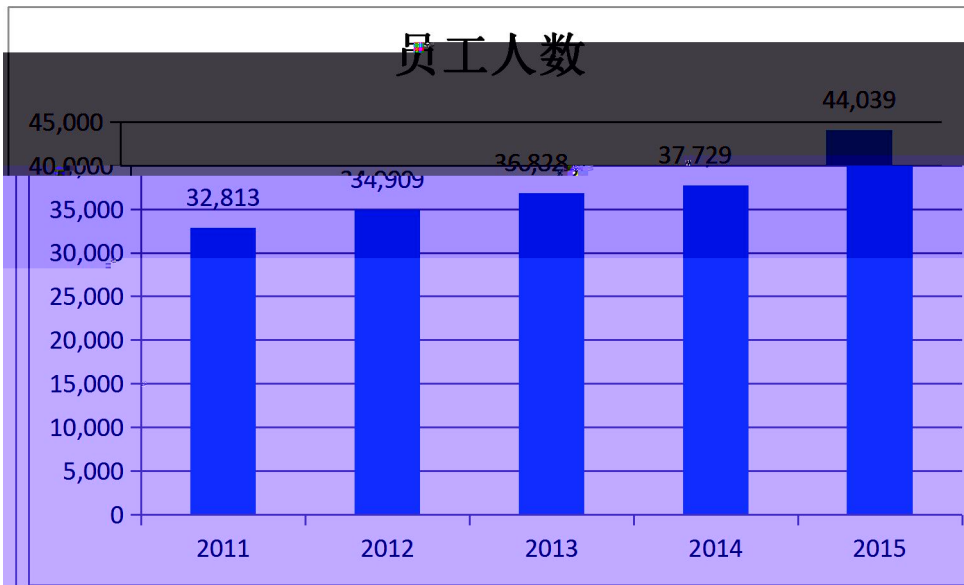
2015

2.48

COD

6.5

1906



1000

2015 5

20

EMBA

1983

1994

1996 6

6044

20

4200

4000

7560

1  
2007 15  
33 2010  
300 2012  
300  
2003 2011 300  
200 " " 2015  
2126 2015 500

2  
2011 250  
2012 150 2015  
1.5 2015 10 17 2007-2015  
1.56

3  
2007 2009 30 210  
2015 12 31  
1856

4

1500

3409

5

2015

170

2008

60

2015

18

2008

6

2008

750

2008

5

200

30

172

90

29

520

2015

a "